

The daily evidence digest collates recently released reports and evidence – provision of these links does not imply endorsement nor recommendation.

Cohort study, telehealth, oxygen therapy, protective gowns, WHO guidance

There are a number of pre-peer review research papers:

- A prospective cohort study of more than 9 million individuals enrolled in Kaiser Permanente healthcare systems in California and Washington, USA [here](#)
- A systematic review on cardiovascular diseases, COVID-19 mortality and ICU admission [here](#)
- Meta-analysis of COVID-19-related mortality in Europe, by age group [here](#)

Also in the scientific literature:

- JAMA Surgery features a University of Wisconsin blueprint for restructuring a surgical department (Figure 1) [here](#)

Correspondence published in Nature Medicine describes how virtual care was scaled up in a Netherlands hospital [here](#)

The Australian National COVID-19 Clinical Evidence Taskforce released two guidelines:

- A guideline for high-flow nasal oxygen therapy (HFNO) in different settings [here](#)
- A guideline for antivirals and other disease modifying treatments [here](#)
- A decision flowchart for assessment for suspected COVID-19 [here](#)
- A decision flowchart on management of patients with suspected mild COVID-19 [here](#)

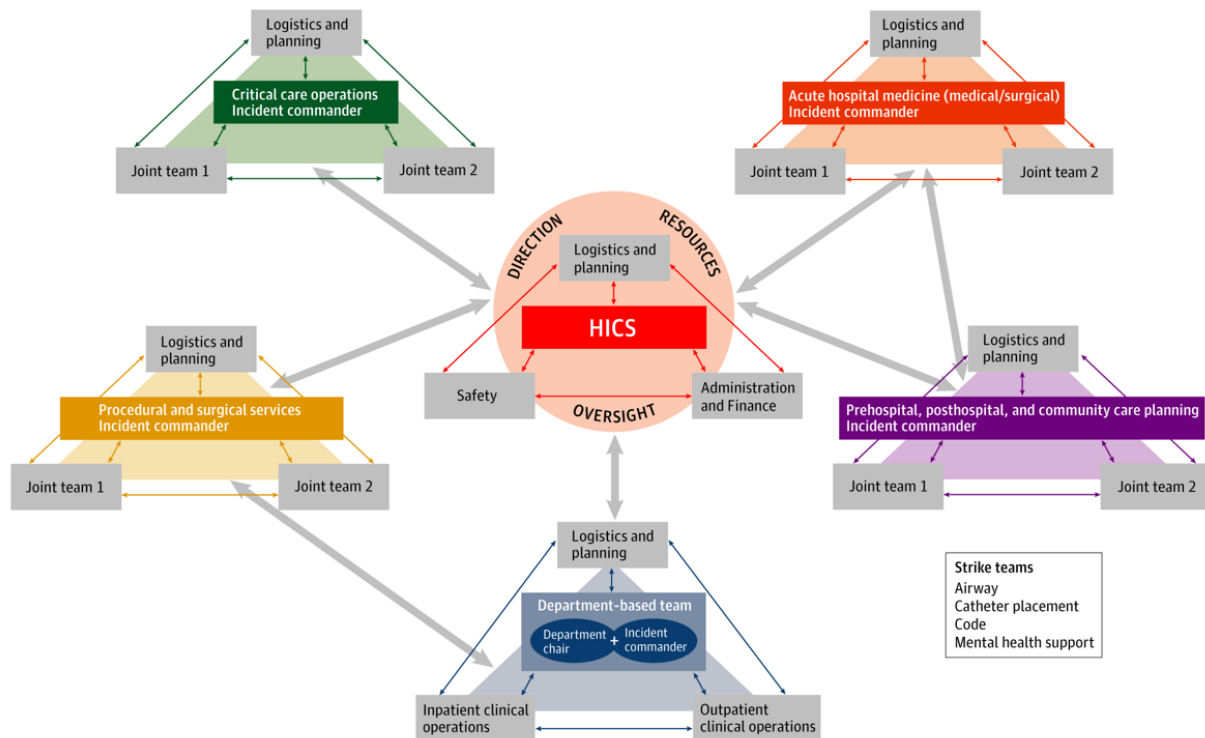
The Centre for Evidence Based Medicine released:

- A review on the effectiveness of protective gowns and aprons in primary care [here](#)
- An editorial about the UK Royal College of General Practitioners' surveillance data on COVID-19 in the community, suggesting that UK community transmission is low and not at epidemic levels [here](#)

There is new guidance and information from:

- The World Health Organization, on adjusting public health and social measures [here](#)
- The Australian and New Zealand Intensive Care Society, on guiding principles for complex decision making for COVID-19 [here](#)
- The Australian Health Protection Principal Committee, about next stage modelling [here](#)

Figure 1. Mobilisation of healthcare system response to COVID-19



Source: Zarzaur et al, 2020

Twitter

The Prime Minister provided an update on modelling, forward planning framework, schools and protecting people with disability [here](#)

Over the week there has been a number of webinars and tweet chats with lessons learnt being discussed through Twitter.

Handle	Link
@ISQua	ISQua Webinar : How to better understand the manage the COVID-19 crisis using implementation science
@BerylInstitute	The Beryl Institute Webinar : Psychological First Aid: Managing Emotional Challenges in this Unprecedented Time
@bmj_latest	BMJ tweetchat via #BMJDebate: Wider health impacts of the COVID-19 pandemic

The ACI and the NSW Health Critical Intelligence Unit has released a COVID-19 website that houses daily evidence digests and rapid evidence reviews. Follow @nswaci and track #ACIShare and #NSWHealthCIU for regular updates [here](#)

The daily evidence digest collates recently released reports and evidence – provision of these links does not imply endorsement nor recommendation.